

1

West Beach
Club Drive

Penthouse





Penthouse

The largest of the four Penthouses at Naples Beach Club, this top-floor residence is designed with the graciousness of a spacious estate home. It features private gardens on all sides and a full-size outdoor pool, and is located only a few steps from the beach.

Light and views

The residence is filled with light and air: generous 14-foot-high ceilings; rooms opening to large outdoor entertaining spaces; west-, north-, south- and east-facing views from sunrise to sunset—these are some of the features that make this Penthouse a showplace residence.

Exceptional interiors

The home features seven bedrooms, ten full bathrooms and three half baths—all carefully detailed by Champalimaud Design. Kitchen appliances are by Wolf, Sub-Zero and Miele with custom cabinetry. A choice of two interior palettes is available: Beachwood, with clean lines and warm materials; or Seashell, an aesthetic rooted in tradition but with a nod to modern living. The master suites feature their own entry foyers, His and Hers bathrooms and generous walk-in closets.

Private, direct access

The Penthouse is a short stroll to the beach, and only steps to the spa, golf and amenities in Market Square. There are three private entries to the home: a direct elevator from the lobby with secure parking, beachside stairs from the veranda to the residents pools and beach, and golfside stairs from the motor court.

Indoor-outdoor living

The Penthouse is surrounded by terraced gardens. Master bedroom suite one opens to a private spa garden and lounging spaces. Master bedroom suite two opens to a private spa and lounging area. Great Room one opens to an expansive, west-facing terrace with lounging, dining and an elliptical pool. Great Room two opens to a spacious east-facing terrace with outdoor lounging.

Arrival

- 1 Elevator
- 2 Service Elevator

Master Suite

- 3 Master Bedroom 1 20' x 19'
- 4 Master Bathroom 1 17' x 14'
- 5 Master Bedroom 2 19' x 17'
- 6 Master Bathroom 2 18' x 11'
- 7 Walk-In Closet

Secondary Bedrooms

- 8 Junior Master Bedroom 11' x 20'
- 9 Junior Master Bathroom 6' x 15'
- 10 Bedroom 4 12' x 17'
- 11 Bedroom 5 15' x 10'
- 12 Bedroom 6 20' x 10'
- 13 Bedroom 7 15' x 14'

Living Areas

- 14 Great Room 1 26' x 33'
- 15 Great Room 2 31' x 18'
- 16 Family/Dining Room 28' x 27'
- 17 Media Room 24' x 21'
- 18 Kitchen 25' x 26'
- 19 Dining 23' x 25'

Lifestyle Areas

- 20 Interior Courtyard
- 21 Fitness Room 12' x 28'
- 22 Sauna
- 23 Sitting Room 15' x 17'
- 24 Study 12' x 14'

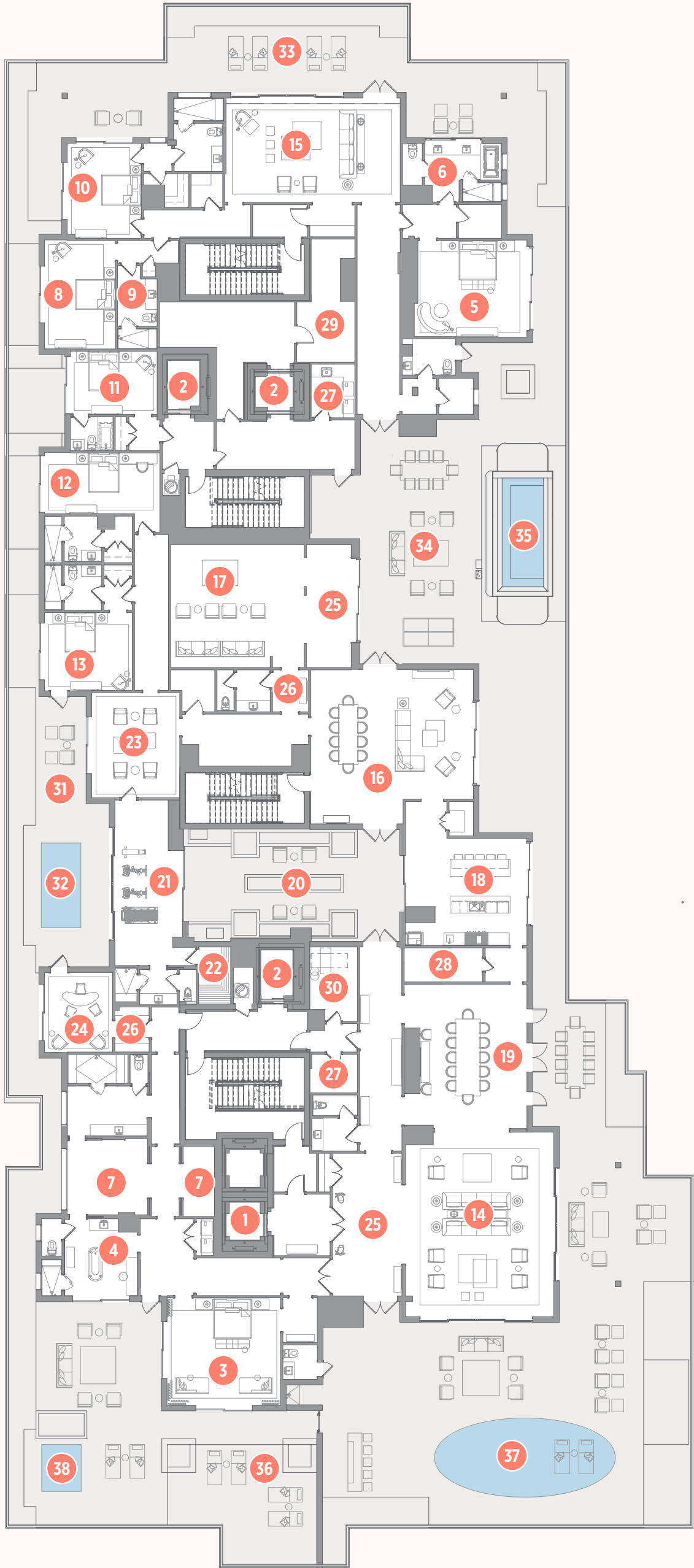
Other Areas

- 25 Gallery
- 26 Mud Room
- 27 Laundry
- 28 Wine Room
- 29 Tech Room
- 30 Utilities Room

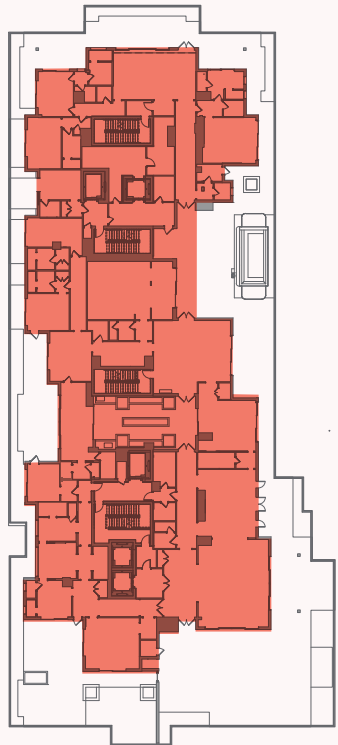
Outdoor Living Spaces

- 31 Terrace Lounge - North 17' x 48'
- 32 Therapeutic Plunge Pools
- 33 Terrace - East 42' x 15'
- 34 Terrace - South 45' x 43'
- 35 Family Pool
- 36 Terrace - West 26' x 39', 33' x 27' & 59' x 91'
- 37 Elliptical Pool
- 38 Spa

GOLF VIEW

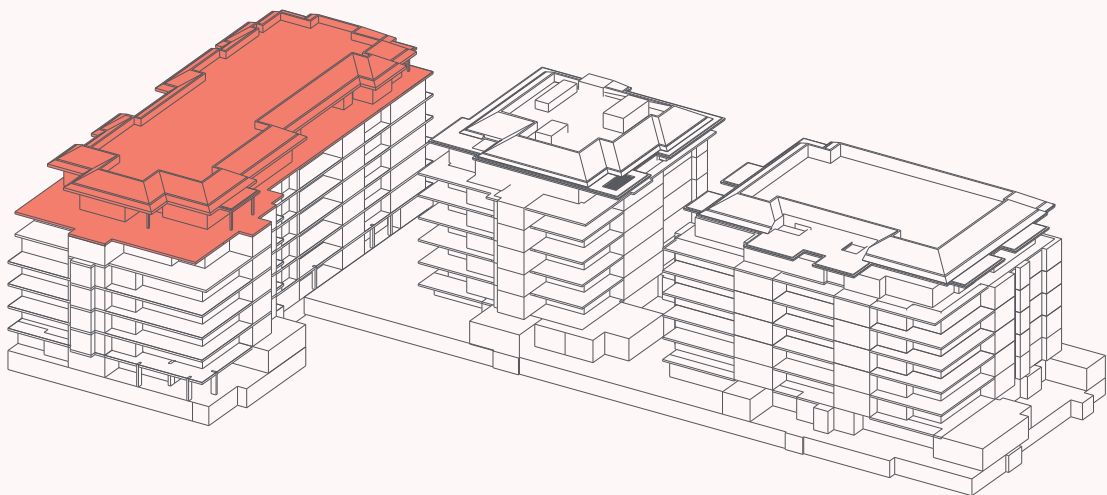


Golf View



Water View

WATER VIEW



7 Bedrooms
10 Full Baths
3 Half Baths
Indoor: 15,385 SF
Outdoor: 11,675 SF
Total: 27,060 SF



ORAL REPRESENTATIONS CANNOT BE RELIED UPON AS CORRECTLY STATING THE REPRESENTATIONS OF THE DEVELOPER. FOR CORRECT REPRESENTATIONS, MAKE REFERENCE TO THE DOCUMENTS REQUIRED BY SECTION 718.503, FLORIDA STATUTES, TO BE FURNISHED BY A DEVELOPER TO A BUYER. All prices, plans, specifications, features, amenities and other descriptions and depictions are preliminary and are subject to change without notice and may not be included. Please refer to the purchase agreement. These materials are not intended to be an offer to sell, or solicitation of an offer to buy a unit in the condominium. Such an offering shall only be made pursuant to the prospectus for the condominium. No statements should be relied upon unless made in the prospectus or in the applicable purchase agreement. In no event shall any solicitation, offer or sale of a unit in the condominium be made in, or to residents of, any state or country in which such activity would be unlawful. 🏠

All measurements are approximate and may vary. Stated square footages of units are measured to the exterior boundaries of the exterior walls and the centerline of interior demising walls and vary from the square footage that would be determined by using the description and definition of the "Unit" set forth in the Declaration of Condominium (which generally only includes the interior airspace between the perimeter walls and excludes all interior structural components and other common elements). See the Declaration of Condominium for further details.